

# Keep It Simple 2025: Innovations That Streamline Your Tax Season

Get ready for a tax season that's smoother and more efficient than ever. Keep It Simple 2025 introduces a suite of powerful updates designed to simplify your workflow, enhance accuracy, and save you time. From groundbreaking improvements to remote signatures for MFJ returns to seamless prior-year import confirmations and efficient solutions for rejected returns, these updates are tailored to meet the evolving needs of today's tax professionals. Dive into the details of these enhancements and see how Keep It Simple 2025 empowers you to deliver top-tier service to your clients with ease and confidence.

**K** by Kevin Hetrick

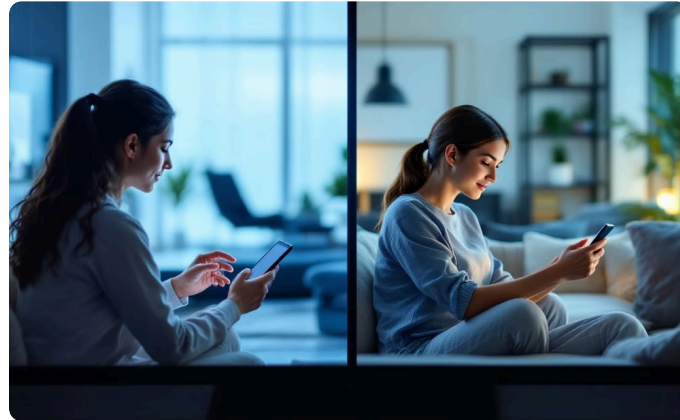


# Simplifying Remote Signatures for MFJ Returns



## ERO Initiates the Process

The Electronic Return Originator sends separate digital signature requests for both spouses through our secure system



## Convenient Separate Signing

Primary taxpayer and spouse receive individual signature links, allowing them to sign independently



## Secure Completion

Both signatures are securely collected and verified, completing the MFJ return process

# Seamless Importing of Prior-Year Returns

1

## Initiate Import Process

Start by importing prior-year returns through our streamlined interface for effortless year-to-year transitions

2

## Preparer Verification

System automatically validates if prior-year preparer matches current preparer for proper accountability

3

## Seamless Transition

Update current year preparer information as needed while maintaining complete data accuracy

# New Updates for Resolving Rejected Returns

1

## SSN Rejection Notice

When the return is rejected due to a duplicate Social Security Number claim, don't worry - there's now a simple solution.

2

## Request A IP PIN

Have the taxpayer visit [irs.gov](https://www.irs.gov) to request a Personal Identification Number (PIN) directly through the secure portal.

3

## Smooth Resubmission

Include the new IP PIN when resubmitting the return for efficient processing. Detailed guidance will be available in the software once released.